



WinampRemote

Version 1.0.3

End-User Documentation



TABLE OF CONTENTS

1. Installation
 - a. Installation of windows server application
 - b. Installation on Android phone
 - c. Settings on server applications
 - d. Settings on Android phone

2. Using the WinampRemote
 - a. Main screen functions
 - b. Playlist
 - c. Equalizer

1. INSTALLATION

Before you can use WinampRemote you should install an application on your Android phone as well as on your PC.

1.A Installation of windows server application

Step 1

If you haven't already, download the server application installation file SetupWinampRemote.exe from www.van-kampen.nl/Android

Step 2

Run the setup

Click Next to continue

Click on Agree to agree to the license agreement

Choose your installation path and click on next

Select the Startmenu folder and click on Install

1.B Installation on Android phone

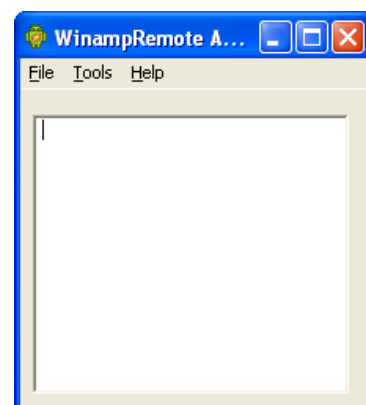
Visit the Android Market and locate the WinampRemote application under Applications – Multimedia (or just do a search). Click on the install button, click on OK to grant network access to this application and proceed with the installation.

1.C Settings of windows server application (WinampRemote Android server)

To use WinampRemote the settings of the server application have to be checked before running the application on the phone.

Step 1

Start the server by clicking on the icon in the startmenu



Step 2

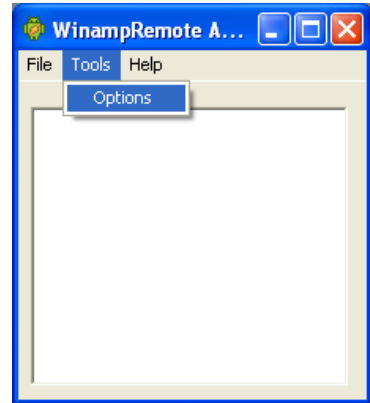
Open the settings by clicking on Tools – Options

Step 3

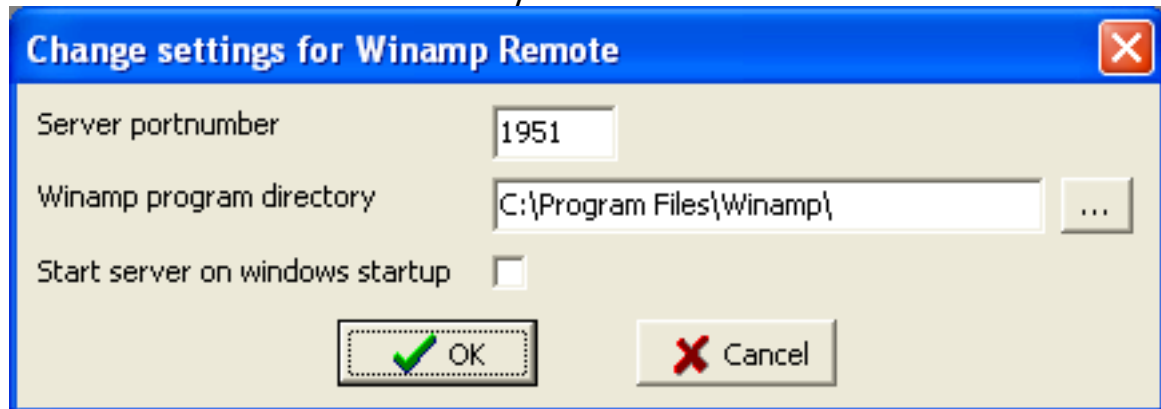
Fill in the correct value and click on OK

Serverport: a free tcp port on which the server can run

Winamp program directory: directory where winamp was installed (very important, playlist will not function if incorrect install path is entered Please note that you have to end with a back slash “\”



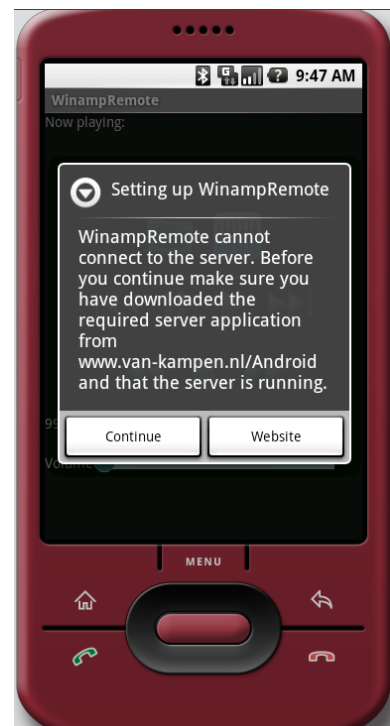
Start server on windows startup: will install server as a windows server



1.D Settings of phone application WinampRemote

Before you start WinampRemote on your phone for the first time, make sure you have the windows server and Winamp running on your PC and WIFI is enabled on your phone. It is possible to use WinampRemote without wifi, but you will need to have you pc directly connected to internet or the server port should be forwarded in your router.

When you start WinampRemote for the first time it will try to connect to the server on default vales. This will most likely fail and therefore take some time. If you receive force close message do not force close directly. If no connection could be established a warning message will be shown (see image)



You can click on Continue.

Step 1

Click on the menu button

Step 2

Select Settings

Step 3

The settings window will now be shown.

By default 2 profiles will be created.

We will now use the "Default" profile to change the settings to the correct values.

Fill in the settings as below



Profile title: Name for this profile, leave at default or change if desired.

Server IP: IP address of your pc where the server application is running

Server port: same port number as you setup your server on

Media folder: base directory where all your music is located on your harddisk

Step 4

Click on save profile

Click on use profile

You now should be able to control Winamp from your phone.

As you may have noticed you also have the ability to create a new profile with the "new profile" button. This will create a blank profile, do not forget to enter a new title before saving. That last button on the settings screen is the "delete profile" button. This button will delete the selected profile. Note that you will need at least one profile so you will not be able to delete a profile when only one exists.

2. USING WINAMP REMOTE

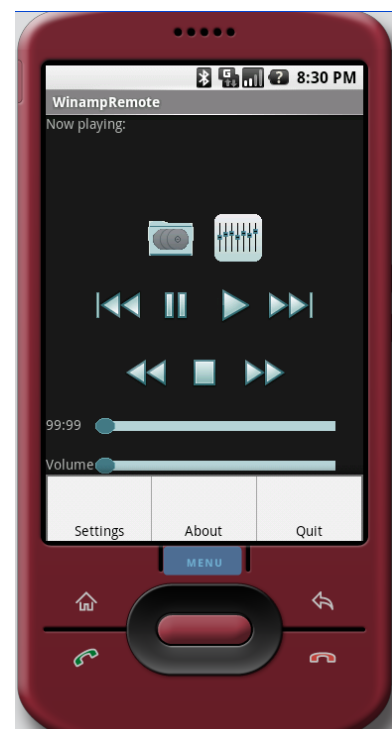
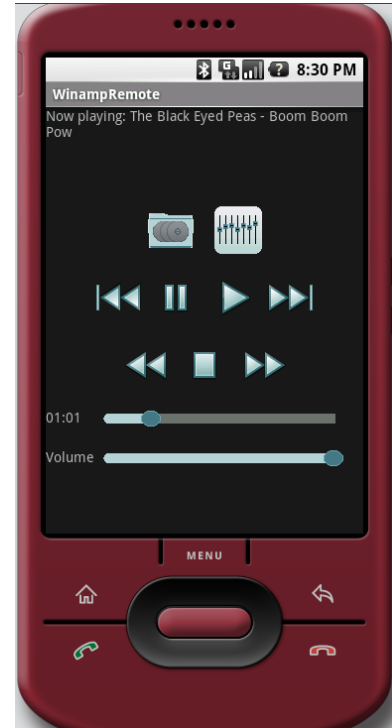
2.A Main screen functions

When WinampRemote is launched the main screen will be launched. From the top to the bottom, from left to right it features the following:

- Display with title of song playing
- Button to open playlist editor
- Button to open the equalizer
- Previous song button
- Pause button
- Play button
- Next song button
- Back button
- Stop button
- Forward button
- Elapsed playing time
- Progress bar showing the progress in the current song, can also be used to select playing position
- Volume bar showing current volume, can be used to set volume to preferred position

When you click on the menu button, you will be able to select:

- Settings
- About window
- Quit application

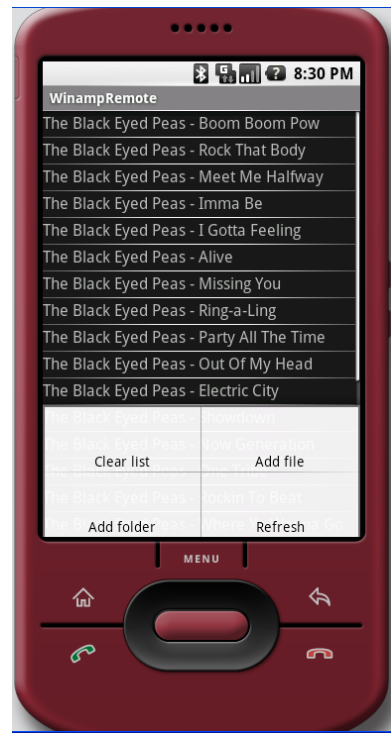
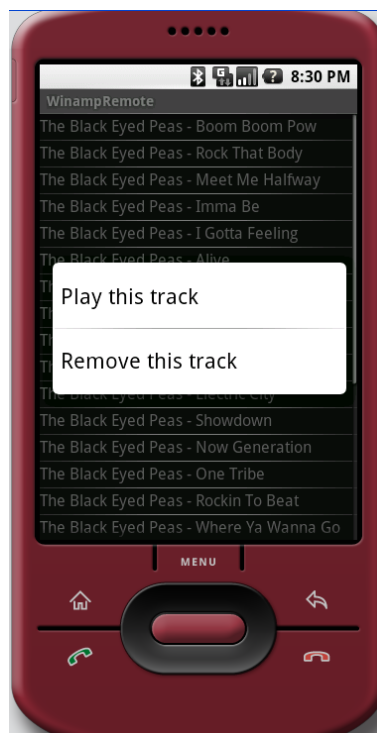


2.B Playlist editor

When the playlist button of the mainscreen is clicked the playlist will showup on your phone. Pressing on one of the songs for over 1 second will show up the context menu which lets you play the selected track or remove the selected track

When you click on the menu button, you will be able to select:

- Clear list : this will clear all entries from the playlist
- Add file: this will open the add file window
- Add folder: this will open the add folder window
- Refresh: this will refresh the playlist with Winamp on your computer.



The 'Add file' window
The add file option will start with opening the basic media folder from your settings. It will show all media files and all folders. If you click on a media file it will be directly added to your playlist and you will return back to the playlist. If you select a folder that folder we be opened. Hitting a letter on your keyboard will scroll down to the first title starting with that letter.



The 'Add a folder' window
The add file option will also start with opening the basic media folder from your settings. You can click on each folder to view underlying folders. Once you have selected a folder with no underlying folders all media files in that folder will be added to the playlist and you will return to the playlist. Hitting a letter on your keyboard will scroll down to the first folder starting with that letter.

2.A Equalizer

If you click on the equalizer button of the main screen the equalizer screen is opened. This will allow you to set all equalizer bands but also the balance (or pan). The last control on this screen is the preamp. Please be careful with using this control because it can boost up the output volume extremely.

